

STANDARD EQUIPMENT

ENGINE

- Engine, HINO J05E-TG, Diesel engine with turbocharger and intercooler
- Automatic engine deceleration
- Auto Idle Stop (AIS)
- Batteries (2 x 12V - 96Ah)
- Starting motor (24V - 5 kW), 50 amp alternator
- Removable clean-out screen for radiator
- Automatic engine shut-down for low engine oil pressure
- Engine oil pan drain cock
- Double element air cleaner

CONTROL

- Working mode selector (H-mode and S-mode)
- Power Boost

SWING SYSTEM & TRAVEL SYSTEM

- Swing rebound prevention system
- Straight propel system
- Two-speed travel with automatic shift down
- Sealed & lubricated track links
- Grease-type track adjusters
- Automatic swing brake

HYDRAULIC

- Arm regeneration system
- Auto warm up system
- Aluminum hydraulic oil cooler

MIRRORS & LIGHTS

- Two rearview mirrors
- Two front working lights

CAB & CONTROL

- Two control levers, pilot-operated
- Tow eyes
- Horn, electric
- Integrated left-right slide-type control box
- Cab, all-weather sound suppressed type
- Cab light (interior)
- Coat hook
- Luggage tray
- Large cup holder
- Detachable two-piece floor mat
- 7-way adjustable suspension seat
- Retractable seatbelt
- Headrest
- Handrails
- Heater and defroster
- Intermittent windshield wiper with double-spray washer
- Skylight
- Tinted safety glass
- Pull-type front window and removable lower front window
- Easy-to-read multi-display monitor
- Automatic air conditioner
- Emergency escape hammer
- Radio, AM/FM Stereo with speakers

OPTIONAL EQUIPMENT

- Wide range of bucket
- Various optional arms
- Wide range of shoes
- Cab light
- Travel alarm
- Additional track guide
- Under cover
- Nibbler & Breaker hydraulic piping
- Extra hydraulic piping
- Front-guard protective structures

Note: Standard and optional equipment may vary. Consult your KOBELCO dealer for specifics.

Note: This catalog may contain attachments and optional equipment that are not available in your area. And it may contain photographs of machines with specifications that differ from those of machines sold in your areas. Please consult your nearest KOBELCO distributor for those items you require. Due to our policy of continuous product improvements all designs and specifications are subject to change without advance notice. Copyright by **KOBELCO CONSTRUCTION MACHINERY CO., LTD.** No part of this catalog may be reproduced in any manner without notice.

KOBELCO CONSTRUCTION MACHINERY CO., LTD.

17-1, Higashigotanda 2-chome, Shinagawa-ku, Tokyo 141-8626 JAPAN
Tel: +81 (0) 3-5789-2146 Fax: +81 (0) 3-5789-2135
www.kobelco-kenki.co.jp/english_index.html

Inquiries To:

Bulletin No. SK200/SK210LC-RUSSIAN-ROPS-101

2014073000 Printed in Japan

Hydraulic Excavators

SK200
SK210^{LC}

- Bucket Capacity:
0.7 – 1.05 m³ ISO heaped
- Engine Power:
118 kW /2,000 min⁻¹ (ISO14396)
- Operating Weight:
20,400 kg-SK200
20,800 kg-SK210LC



Engine

Model	HINO J05E-TG
Type:	Direct injection, water-cooled, 4-cycle diesel engine with turbocharger, intercooler
No. of cylinders:	4
Bore and stroke:	112 mm X 130 mm
Displacement:	5.123 L
Rated power output:	118 kW/2,000 min ⁻¹ (ISO14396:Without fan) 114 kW/2,000 min ⁻¹ (ISO9249:With fan)
Max. torque:	592 N·m/1,600 min ⁻¹ (ISO14396:Without fan) 572 N·m/1,600 min ⁻¹ (ISO9249:With fan)

Hydraulic System

Pump	
Type:	Two variable displacement pumps + 1 gear pump
Max. discharge flow:	2 X 220 L/min, 1 X 20 L/min
Relief valve setting	
Boom, arm and bucket:	34.3 MPa {350 kgf/cm ² }
Power Boost:	37.8 MPa {385 kgf/cm ² }
Travel circuit:	34.3 MPa {350 kgf/cm ² }
Swing circuit:	29.0 MPa {296 kgf/cm ² }
Control circuit:	5.0 MPa {50 kgf/cm ² }
Pilot control pump:	Gear type
Main control valves:	8-spool
Oil cooler:	Air cooled type

Swing System

Swing motor:	Axial-piston motor
Brake:	Hydraulic; locking automatically when the swing control lever is in the neutral position
Parking brake:	Hydraulic disc brake
Swing speed:	12.5 min ⁻¹ {rpm}
Tail swing radius:	2,860 mm
Min. front swing radius:	3,540 mm

Attachments

Backhoe bucket and arm combination

Use	Backhoe bucket					
	Normal digging			Light-duty	Heavy digging	
Bucket capacity	Heaped (ISO 7451) m ³	0.7	0.8	0.93	1.05	0.8
	Struck (ISO 7451) m ³	0.52	0.59	0.67	0.75	0.59
Opening width	With side cutters mm	1,080	1,160	1,330	1,460	1,180
	Without side cutters mm	980	1,060	1,230	1,360	1,060
No. of bucket teeth		5	5	5	6	5
Bucket weight kg		630	640	710	770	700
Combinations	2.40 m short arm	○	○	○	△	○
	2.94 m standard arm	○	○	△	×	○
	3.50 m long arm	○	△	×	×	×

○ Recommended △ Loading only × Not recommended

Travel System

Travel motors:	2 X axial-piston, two-step motors
Travel brakes:	Hydraulic disc brake per motor
Parking brakes:	Oil disc brake per motor
Travel shoes:	46 each side (SK200) 49 each side (SK210LC)
Travel speed:	6.0/3.6 km/h
Drawbar pulling force:	229 kN {23.3 tf} (ISO7464)
Gradeability:	70 % {35°}
Ground clearance:	450 mm

Cab & Control

Cab	
All-weather, sound-suppressed steel cab mounted on the silicon-sealed viscous mounts and equipped with a heavy, insulated floor mat.	
Control	
Two hand levers and two foot pedals for travel	
Two hand levers for excavating and swing	
Electric rotary-type engine throttle	

Boom, Arm & Bucket

Boom cylinders:	120 mm X 1,355 mm
Arm cylinder:	135 mm X 1,558 mm
Bucket cylinder:	120 mm X 1,080 mm

Refilling Capacities & Lubrications

Fuel tank:	370 L
Cooling system:	22 L
Engine oil:	22 L
Travel reduction gear:	2 X 5.3 L
Swing reduction gear:	3.0 L
Hydraulic oil tank:	146 L tank oil level 230 L hydraulic system

Working Ranges

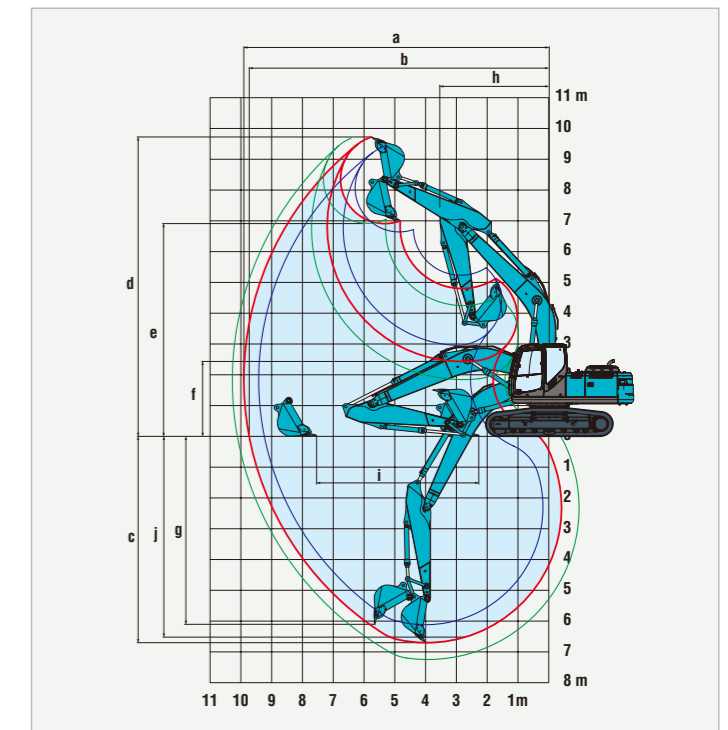
Range	Boom	5.65 m		
		Arm	Short 2.4 m	Standard 2.94 m
a - Max. digging reach		9.42	9.9	10.34
b - Max. digging reach at ground level		9.24	9.73	10.17
c - Max. digging depth		6.16	6.7	7.26
d - Max. digging height		9.51	9.72	9.75
e - Max. dumping clearance		6.68	6.91	6.97
f - Min. dumping clearance		2.98	2.43	1.87
g - Max. vertical wall digging depth		5.57	6.1	6.47
h - Min. swing radius		3.56	3.54	3.48
i - Horizontal digging stroke at ground level		4.08	5.27	6.08
j - Digging depth for 2.4 m (8') flat bottom		5.95	6.52	7.08
Bucket capacity ISO heaped m ³		0.93	0.8	0.7

Digging Force (ISO 6015)			
Arm length	Short 2.4 m	Standard 2.94 m	Long 3.5 m
Bucket digging force	143 (14.6) 157 (16.0)*	143 (14.6) 157 (16.0)*	143 (14.6) 157 (16.0)*
Arm crowding force	121 (12.3) 133 (13.6)*	102 (10.4) 112 (11.4)*	91.8 (9.36) 101 (10.3)*

*Power Boost engaged.

Dimensions

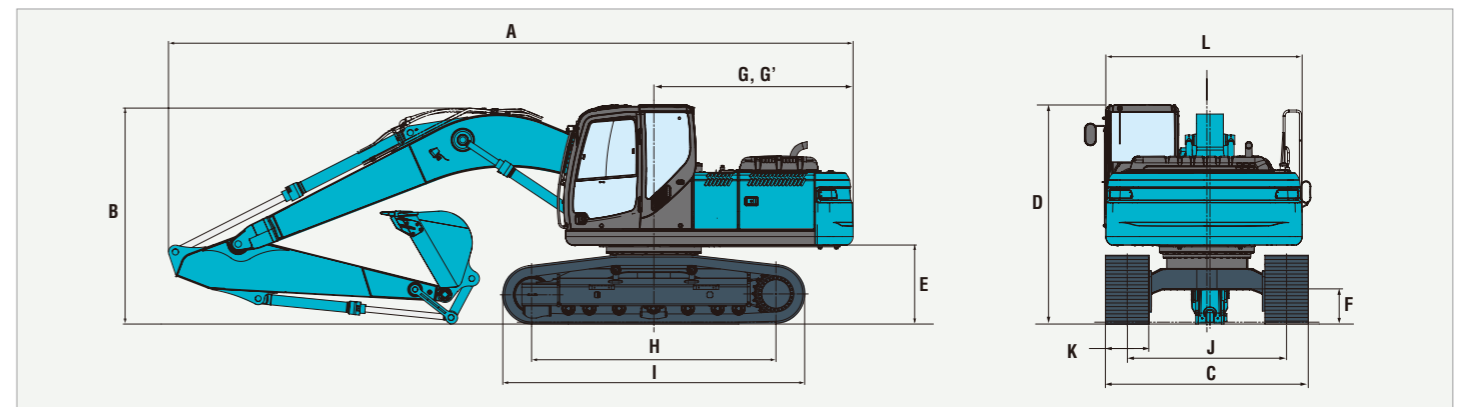
Arm length	Short 2.4 m	Standard 2.94 m	Long 3.5 m
A Overall length	9,640	9,560	9,630
B Overall height (to top of boom)	3,160	2,980	3,180
C Overall width	SK200	2,800	2,800
	SK210LC	2,990	2,990
D Overall height (to top of cab)	3,030	3,030	3,030
E Ground clearance of rear end*	1,060	1,060	1,060
F Ground clearance*	450	450	450



— Short Arm
— Standard Arm
— Long Arm

Unit: mm			
G Tail swing radius		2,860	2,860
G' Distance from center of swing to rear end		2,860	2,860
H Tumbler distance	SK200	3,370	3,370
	SK210LC	3,660	3,660
I Overall length of crawler	SK200	4,170	4,170
	SK210LC	4,450	4,450
J Track gauge	SK200	2,200	2,200
	SK210LC	2,390	2,390
K Shoe width		600/700/800	
L Overall width of upperstructure		2,710	2,710

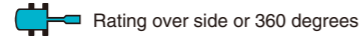
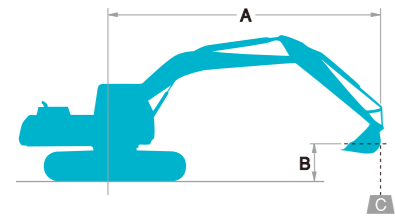
* Without including height of shoe lug.



Operating Weight & Ground Pressure

In standard trim, with standard boom, 2.94 m arm, and 0.8 m³ ISO heaped bucket

Shaped	Shoe width mm		Triple grouser shoes (even height)		
			600	700	800
Overall width	mm	SK200	2,800	2,900	3,000
		SK210LC	2,990	3,090	3,190
Ground pressure	kPa (kgf/cm ²)	SK200	46 (0.47)	40 (0.40)	35 (0.36)
		SK210LC	43 (0.44)	38 (0.38)	33 (0.34)
Operating weight	kg	SK200	20,400	20,800	21,000
		SK210LC	20,800	21,200	21,500



A - Reach from swing centerline to bucket hook
 B - Bucket hook height above/below ground
 C - Lifting capacities in kilograms
 • Max. discharge pressure: 37.8 MPa (385 kgf/cm²)

SK200		Standard Arm: 2.94 m Bucket: 0.8 m ³ ISO heaped 640 kg Shoe: 600 mm												
		1.5 m		3.0 m		4.5 m		6.0 m		7.5 m		At Max. Reach		Radius
B	A	Rating over front	Rating over side or 360 degrees	Rating over front	Rating over side or 360 degrees	Rating over front	Rating over side or 360 degrees	Rating over front	Rating over side or 360 degrees	Rating over front	Rating over side or 360 degrees	Rating over front	Rating over side or 360 degrees	
7.5 m	kg											*2,860	*2,860	6.33 m
6.0 m	kg							*4,610	4,540			*2,710	*2,710	7.42 m
4.5 m	kg							*5,130	4,350	*4,520	2,930	*2,720	2,530	8.09 m
3.0 m	kg			*12,070	*12,070	*7,620	6,420	*5,930	4,070	4,450	2,800	*2,850	2,260	8.44 m
1.5 m	kg			*6,670	*6,670	*9,260	5,850	6,140	3,800	4,300	2,670	*3,140	2,150	8.51 m
G. L.	kg			*7,690	*7,690	9,410	5,520	5,910	3,600	4,180	2,560	3,570	2,170	8.30 m
-1.5 m	kg	*6,890	*6,890	*10,910	10,520	9,270	5,400	5,810	3,510	4,130	2,510	3,890	2,370	7.81 m
-3.0 m	kg	*10,460	*10,460	*13,520	10,690	9,320	5,440	5,820	3,520			4,660	2,850	6.96 m
-4.5 m	kg			*10,440	*10,440	*7,450	5,630					*5,670	4,080	5.59 m

SK200		Short Arm: 2.4 m Bucket: 0.93 m ³ ISO heaped 710 kg Shoe: 600 mm												
		1.5 m		3.0 m		4.5 m		6.0 m		7.5 m		At Max. Reach		Radius
B	A	Rating over front	Rating over side or 360 degrees	Rating over front	Rating over side or 360 degrees	Rating over front	Rating over side or 360 degrees	Rating over front	Rating over side or 360 degrees	Rating over front	Rating over side or 360 degrees	Rating over front	Rating over side or 360 degrees	
7.5 m	kg											*4,190	*4,190	5.66 m
6.0 m	kg							*5,050	4,390			*3,950	3,420	6.86 m
4.5 m	kg							*6,550	*6,550	*5,510	4,210	*4,420	2,830	7.58 m
3.0 m	kg							*8,220	6,180	*6,250	3,950	4,360	2,720	7.95 m
1.5 m	kg							9,590	5,660	6,020	3,700	4,230	2,600	8.02 m
G. L.	kg			*6,870	*6,870	9,280	5,410	5,830	3,530	4,140	2,510	3,890	2,360	7.81 m
-1.5 m	kg	*7,710	*7,710	*11,810	10,530	9,220	5,350	5,770	3,470			4,310	2,610	7.28 m
-3.0 m	kg	*12,470	*12,470	*12,240	10,750	*8,820	5,450	5,850	3,540			5,360	3,260	6.36 m
-4.5 m	kg			*8,600	*8,600	*6,210	5,730					*5,690	5,190	4.81 m

SK200		Long Arm: 3.5 m Bucket: 0.7 m ³ ISO heaped 630 kg Shoe: 600 mm												
		1.5 m		3.0 m		4.5 m		6.0 m		7.5 m		At Max. Reach		Radius
B	A	Rating over front	Rating over side or 360 degrees	Rating over front	Rating over side or 360 degrees	Rating over front	Rating over side or 360 degrees	Rating over front	Rating over side or 360 degrees	Rating over front	Rating over side or 360 degrees	Rating over front	Rating over side or 360 degrees	
7.5 m	kg											*2,460	*2,460	6.89 m
6.0 m	kg											*3,200	3,000	7.90 m
4.5 m	kg							*4,530	4,360	*4,240	2,910	*2,370	2,240	8.53 m
3.0 m	kg							*5,250	4,060	4,410	2,750	*2,490	1,990	8.86 m
1.5 m	kg							*10,000	*10,000	*6,720	6,510	*5,360	4,060	8.86 m
G. L.	kg			*10,400	*10,400	*8,520	5,860	6,090	3,750	4,230	2,590	*2,740	1,880	8.92 m
-1.5 m	kg	*3,630	*3,630	*8,600	*8,600	9,310	5,420	5,820	3,500	4,080	2,450	*3,170	1,800	8.73 m
-3.0 m	kg	*6,370	*6,370	*10,620	10,170	9,080	5,220	5,660	3,360	3,990	2,370	3,440	2,030	8.26 m
-4.5 m	kg	*9,310	*9,310	*14,170	10,270	9,060	5,200	5,630	3,330			4,030	2,400	7.47 m
-6.0 m	kg	*12,890	*12,890	*11,730	10,580	*8,160	5,340	5,760	3,450			5,460	3,280	6.21 m
	kg											*5,350	*5,350	4.08 m

Lifting Capacities (Without Bucket): Arm top defined as lift point. Max. discharge pressure: 34.3 MPa (350 kgf/cm²)

SK200		Standard Arm: 2.94 m, Bucket: without Shoe: 600 mm												
		1.5 m		3.0 m		4.5 m		6.0 m		7.5 m		At Max. Reach		Radius
7.5 m	kg							*4,850	*4,850			*3,910	*3,910	
6.0 m	kg							*5,380	4,900			*3,620	3,460	7.36 m
4.5 m	kg							*5,870	4,720	4,980	3,310	*3,540	2,940	8.03 m
3.0 m	kg							*8,540	6,780	*6,640	4,470	4,860	3,200	8.38 m
1.5 m	kg							*10,060	6,260	6,570	4,220	4,730	3,080	8.45 m
G. L.	kg			*5,790	*5,790	9,910	5,980	6,380	4,040	4,630	2,990	4,050	2,630	8.25 m
-1.5 m	kg	*6,130	*6,130	*10,090	*10,090	9,820	5,900	6,300	3,970	4,600	2,970	4,410	2,850	7.75 m
-3.0 m	kg	*10,690	*10,690	*13,310	11,350	*9,600	5,970	6,340	4,010			5,240	3,380	6.89 m
-4.5 m	kg			*9,870	*9,870	*7,240	6,200					*5,450	4,730	5.50 m

SK210LC		Standard Arm: 2.94 m Bucket: 0.8 m ³ ISO heaped 640 kg Shoe: 600 mm												
		1.5 m		3.0 m		4.5 m		6.0 m		7.5 m		At Max. Reach		Radius
B	A	Rating over front	Rating over side or 360 degrees	Rating over front	Rating over side or 360 degrees	Rating over front	Rating over side or 360 degrees	Rating over front	Rating over side or 360 degrees	Rating over front	Rating over side or 360 degrees	Rating over front	Rating over side or 360 degrees	
7.5 m	kg													6.33 m
6.0 m	kg											*4,610	*4,610	7.42 m
4.5 m	kg							*5,130	4,820	*4,520	3,270	*2,720	*2,720	8.09 m
3.0 m	kg							*12,070	*12,070	*7,620	7,180	*5,930	4,540	8.44 m
1.5 m	kg							*6,670	*6,670	*9,260	6,600	*6,750	4,270	8.51 m
G. L.	kg							*7,690	*7,690	*10,160	6,250	6,760	4,060	8.30 m
-1.5 m	kg	*6,890	*6,890	*10,910	*10,910	*10,200	6,130	6,650	3,970	4,710	2,850	4,430	2,220	7.81 m
-3.0 m	kg	*10,460	*10,460	*13,520	12,340	*9,410	6,170	6,670	3,980			5,320	3,220	6.96 m
-4.5 m	kg			*10,440	*10,440	*7,450	6,370					*5,670	4,600	5.59 m

SK210LC		Short Arm: 2.4 m Bucket: 0.93 m ³ ISO heaped 710 kg Shoe: 600 mm												
		1.5 m		3.0 m		4.5 m		6.0 m		7.5 m		At Max. Reach		Radius
B	A	Rating over front	Rating over side or 360 degrees	Rating over front	Rating over side or 360 degrees	Rating over front	Rating over side or 360 degrees	Rating over front	Rating over side or 360 degrees	Rating over front	Rating over side or 360 degrees	Rating over front	Rating over side or 360 degrees	
7.5 m	kg													5.66 m
6.0 m	kg											*5,050	4,870	6.86 m
4.5 m	kg							*6,550	*6,550	*5,510	4,690	*4,420	3,160	7.58 m
3.0 m	kg							*8,220	6,930	*6,250	4,420	4,940	3,050	7.95 m
1.5 m	kg							*9,640	6,400	6,880	4,160	4,810	2,930	8.02 m
G. L.	kg							*6,870	*6,870	*10,220	6,140	6,680	3,990	7.81 m
-1.5 m	kg	*7,710	*7,710	*11,810	*11,810	*9,950	6,080	6,610	3,930			4,920	2,960	7.28 m
-3.0 m	kg	*12,470	*12,470	*12,240	*12,240	*8,820	6,180	*6,410	4,000			*5,870	3,680	6.36 m
-4.5 m	kg					*8,600	*8,600	*6,210	*6,210			*5,690	*5,690	4.81 m

SK210LC		Long Arm: 3.5 m Bucket: 0.7 m ³ ISO heaped 630 kg Shoe: 600 mm												
		1.5 m		3.0 m		4.5 m		6.0 m		7.5 m		At Max. Reach		Radius
B	A	Rating over front	Rating over side or 360 degrees	Rating over front	Rating over side or 360 degrees	Rating over front	Rating over side or 360 degrees	Rating over front	Rating over side or 360 degrees	Rating over front	Rating over side or 360 degrees	Rating over front	Rating over side or 360 degrees	
7.5 m	kg													6.89 m
6.0 m	kg													7.90 m
4.5 m	kg											*4,530	*4,530	8.53 m
3.0 m	kg											*5,360	4,530	8.86 m
1.5 m	kg											*10,000	*10,000	8.86 m
G. L.	kg			*10,400	*10,400	*8,520	6,600	*6,260	4,210	4,810	2,920	*2,740	2,140	8.92 m
-1.5 m	kg	*3,630	*3,630	*8,600	*8,600	*9,700	6,150	6,670	3,960	4,660	2,780	*3,170	2,160	8.73 m
-3.0 m	kg	*6,370	*6,370	*10,620	*10,620	*10,060	5,950	6,500	3,820	4,570	2,700	*3,910	2,320	8.26 m
-4.5 m	kg	*9,310	*9,310	*14,170	11,910	*9,600	5,930	6,480	3,790			4,610	2,730	7.47 m
-6.0 m	kg	*12,890	*12,890	*11,730	*11,730	*8,160	6,070	*5,790	3,910			*5,480	3,710	6.21 m
	kg											*5,350	*5,350	4.08 m

Lifting Capacities (Without Bucket): Arm top defined as lift point. Max. discharge pressure: 34.3 MPa (350 kgf/cm²)

SK210LC		Standard Arm: 2.94 m, Bucket: without Shoe: 600 mm												
		1.5 m		3.0 m		4.5 m		6.0 m		7.5 m		At Max. Reach		Radius
7.5 m	kg											*4,830	*4,830	
6.0 m	kg											*5,340	*5,340	7.36 m
4.5 m	kg											*5,820	5,180	8.03 m
3.0 m	kg											*8,470	7,510	8.38 m
1.5 m	kg											*9,990	6,960	8.45 m
G. L.	kg											*5,770	*5,770	8.25 m
-1.5 m	kg	*6,100	*6,100	*10,070	*10,070	*10,530	6,590	7,110	4,390	5,160	3,270	*4,920	3,140	7.75 m
-3.0 m	kg	*10,670	*1											