



LIFTS YOUR BUSINESS UP



TELESCOPIC HANDLERS

AGRICULTURE LINE



The Range



SMALL RANGE 6.26

page 16

CONFIGURATIONS: CLASSIC 52

Maximum lifting capacity 2.6 t

Maximum height up to 6 mt

The **6.26** telescopic handler of the **Small Range** is the most suitable model for situations where facilities and work environments have limited space. With its 1.93 mt height and 2 m width, it provides performance even in narrow spaces without compromise and without giving up on performance. The 51,7 kW 4F Yanmar engine provides all required power for the handling operations.



COMPACT RANGE 7.30C / 9.30C

page 18

CONFIGURATIONS: CLASSIC 55 / CLASSIC 74 / HLS 55 / HLS 74 / VPS 100

Maximum lifting capacity 3 t

Maximum height from 7 mt to 9 mt

The **Compact range** - thanks to its reduced size - allows you to work in small spaces with extreme ease and to reach heights from 7 to 9 metres with a maximum capacity of 3000 kg.



MIDDLE RANGE 7.30E / 7.35 / 7.45 / 8.40 / 9.30 / 11.35

page 20

CONFIGURATIONS: CLASSIC 55 / CLASSIC 74 / HLS 74 / VPSe 100

Maximum lifting capacity from 3 t to 4.5 t

Maximum height from 7 mt to 11 mt

The **Middle Range** has 24 configurations suitable for agricultural companies seeking an adaptable machine that ensures management savings and high performances thanks to the new technologies applied. The multi-function range with solutions suitable for every use in agriculture.



HEAVY DUTY 9.60 / 9.70 / 10.65

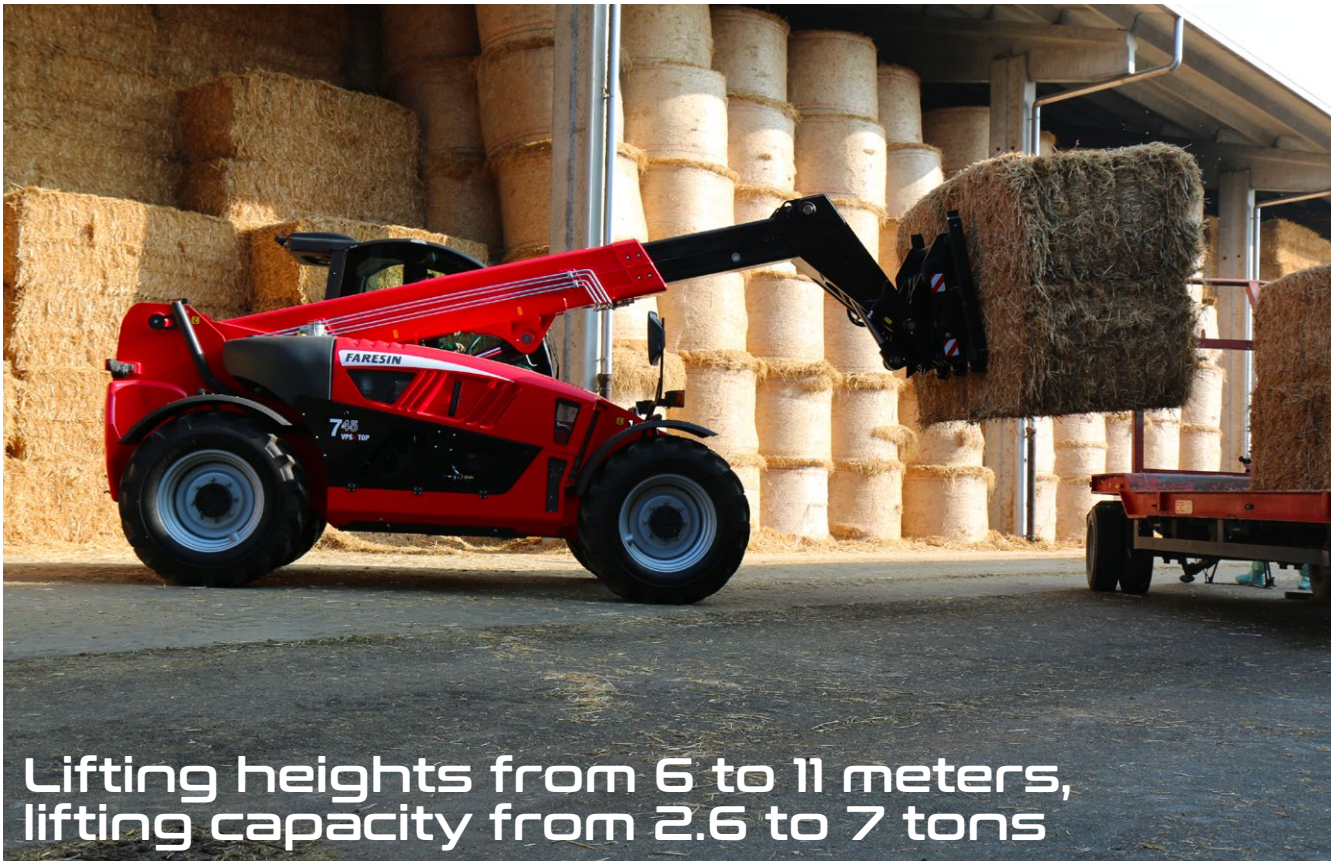
page 22

CONFIGURATIONS: CLASSIC 74 / HLS 74 / VPSe 100

Maximum lifting capacity from 6 t to 7 t

Maximum height from 9 mt to 10 mt

The three new models of the **Heavy Duty** range offer power, precision and control. Available with different types of transmission, maximum speed of 40 km/h and 4 driving modes in HLS 74 and VPSe 100 configurations. Great capacity to handle material without giving up on standard machine performance. Especially required for Biogas plants for its great performances.



Lifting heights from 6 to 11 meters,
lifting capacity from 2.6 to 7 tons

The telescopic boom is made of **Domex S420 steel** it is hinged in the chassis at a lowered position: this assures maximum visibility during loading operations and a better weight distribution.

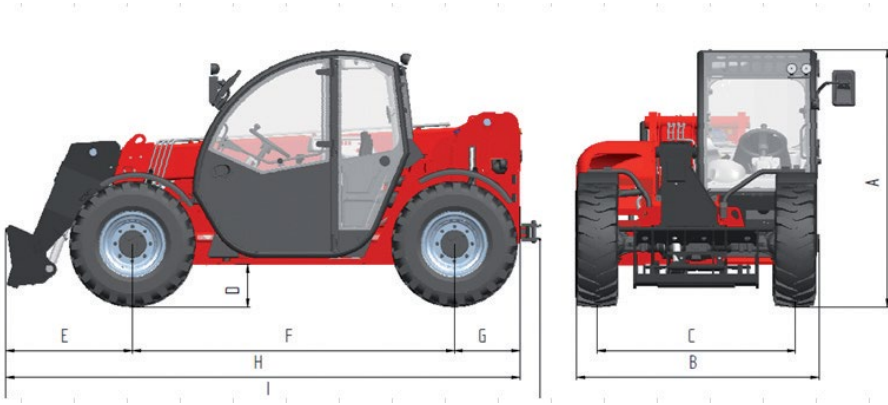
- Internal hydraulic pipes
- Durability even during the most extreme work conditions
- Easy maintenance

Reinforcement plates
for a long life span
even in the most
extreme working
conditions



Small Range 6.26

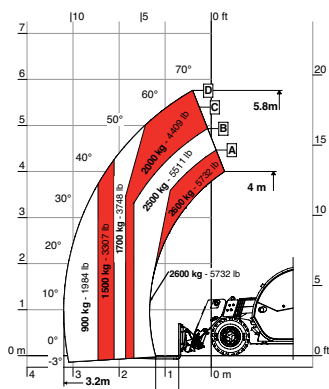
CLASSIC 52



DIMENSIONS (mm)		6.26
A. Height		1935
B. Width		1890
C. Gauge		1550
D. Ground clearance		220
E. Front overhang		990
F. Pitch		2525
G. Rear overhang		520
H. Length without towing hook		4035
I. Length with towing hook		4198
L. Cabin width		960

Dimensions defined on model with wheels 12-16.5

Load diagram



6.26

MODELS	6.26
WEIGHT	
Maximum total unladen weight (kg)	4700
SPECIFICATIONS	
Number of extracting sections	1
Maximum capacity (kg)	2600
Maximum lifting height (mt)	5,9
Maximum horizontal boom extension (mt)	3,2
Boom extension at max height (mt)	0,3
Forks swinging angle (°)	155
TANK CAPACITY	
Hydraulic oil tank (l)	70
Diesel oil tank (l)	80
CONNECTION FOR EQUIPMENT	
	FH

CONFIGURATION	CLASSIC 52
Engine (kW/hp)	Yanmar 51,7/69,3 IIIB/Tier4
Transmission	Hydrostatic
Service pump (l/min)	Gears 80 l/min@230 bar
Joystick	Mechanical electro-proportional
Traction power (kg)	3530
Display	Multi-function
Queen cab cabin	standard
Front and rear LED lights	optional
Manual 6-way diverter	optional
Rear hydraulic connection with dual electro proportional effect	optional
Rear trailer lights socket	optional
Engine water pre-heating	optional
Air conditioning	optional
Hydraulic trailer brakes	optional
Pneumatic trailer brakes	optional
Boom suspension	optional
Floating boom	optional
PEB manual 6-way diverter	optional
Wheels 12-16.5	standard
Wheels 12.5-18	optional
Creeper	optional
Front constant flow	optional
Bucket mode	standard
Quick release	optional